

## AUCTION #2 - SATURDAY – OCTOBER 2, 2021 – 1:30 PM

AUCTION #2 – 69.588 ACRES VACANT LAND – CENTER TWP. – COLUMBIANA CO. – SOLD AS ONE PARCEL – MOSTLY WOODED – LOTS OF MARKETABLE TIMBER PLUS SOME OLD SPOILS WITH TIMBER – MINERAL RIGHTS TRANSFER

ABSOLUTE AUCTION, All sells to highest bidder(s) on location:

**WAYNE BRIDGE RD., LISBON, OH 44432**

Directions: Just south of Rt. 30. Take US Rt. 30 just west of Lisbon 1/3 mile and bear left and south on Wayne Bridge Rd. approx. 2 1/2 miles. Watch for KIKO signs.

***Sale held onsite with online bidding available.***

Land rolling and scenic with great views – south portion is virgin land with nice oak timber, balance old spoils with some pine and mixed variety of trees. Fair amount of frontage plus mineral rights. Maps at site or visit us at [kikoauctions.com](http://kikoauctions.com). Excellent hunting tract and nice building spot.

**TERMS ON BOTH REAL ESTATE AUCTIONS:** 10% down auction day, balance due at closing. A 10% buyer's premium will be added to the highest bid to establish the purchase price. Any desired inspections must be made prior to bidding. All information contained herein was derived from sources believed to be correct. Information is believed to be accurate but not guaranteed.

**Auction By Order Of:** Attorney Jerry Ward, Trustee



Auctioneer/Realtor®  
**RUSSELL T. KIKO JR.**  
330-495-0923  
[rustykiko@kikocompany.com](mailto:rustykiko@kikocompany.com)



Realtors • Auctioneers • Advisors

# AUCTION

LEADING THE INDUSTRY SINCE 1945

## Thomas & Edith K. Mercer Trust

TWO REAL ESTATE LAND AUCTIONS – BOTH WITH MINERAL RIGHTS – BOTH OWNED FOR YEARS

### AUCTION #1 - SATURDAY – OCTOBER 2, 2021 – 10:30 AM

AUCTION #1 – 15.9+ ACRES – GREEN TWP. – MAHONING CO. – MOSTLY TILLABLE – OFFERED IN (3) 5+ ACRE PARCELS – GREAT LOCATION – CANFIELD SCHOOLS

ABSOLUTE AUCTION, All sells to highest bidder(s) on location:

**CORNER OF US RT. 62 & KNAUF ROADS, SALEM, OH 44460**

Directions: Just south of Whitehouse Farm or Rt. 62 north of Salem. Watch for KIKO signs.

***Sale held onsite with online bidding available***

Land gently rolling – mostly tillable – present corn crop reserved. Divided as follows:

**Parcel #1** – 5.33-acre corner tract – fronts on both roads

**Parcel #2** – 5.33-acre tract – fronts on Knauf Rd.

**Parcel #3** – 5.33-acre tract – fronts on Rt. 62 – some woods

Possible lake site – mineral rights transfer. You'll love these parcels. Maps at site or visit us on the web. Sold by the lot choice. Take all or any combination.



**800-533-5456 | [kikoauctions.com](http://kikoauctions.com)**

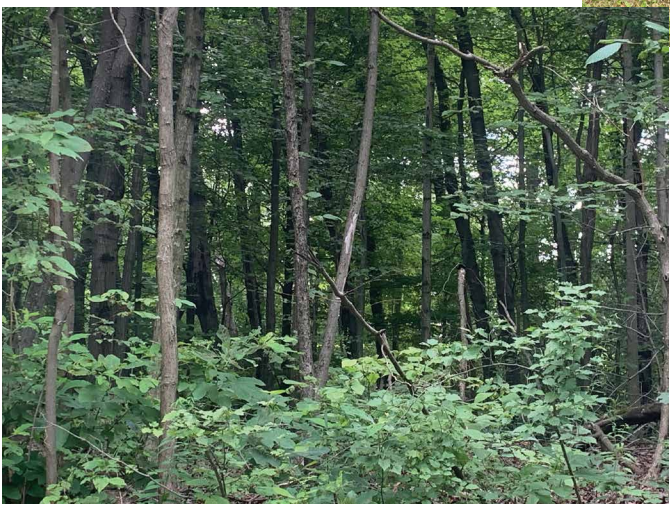
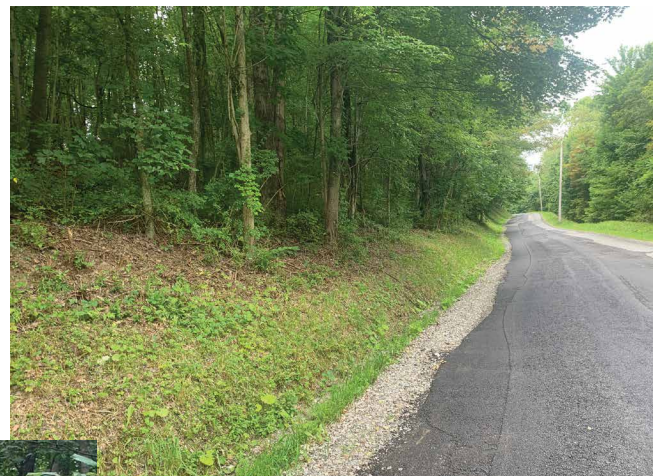


**800-533-5456 | [kikoauctions.com](http://kikoauctions.com)**





# AUCTION #1



# AUCTION #2

